

MSCAN Photogrammetry System Technical Proposal

1. Instruction

Hangzhou Scantech Co., Ltd is a high-tech enterprise which was composed of industry experts, returnees Doctors and high-tech youth talents. It located in Zhejiang overseas high-level talent innovation park. Hangzhou Scantech mainly engaged in the developing, manufacturing and selling of the intelligent visual inspection equipment such as portable 3D scanner and 2D laser sensor. Leading by the returnees Doctors, the R&D team developed a series of mechanical and electronic products which possess the proprietary intellectual property rights. The portable 3D scanner, global photography measurement system and 2D laser sensor are also the foremost equipment in the country. These products have been widely used in colleges, research institutions, automobile industry, large-scale machinery enterprise and modeling design company, and have enjoy great reputation in the market.



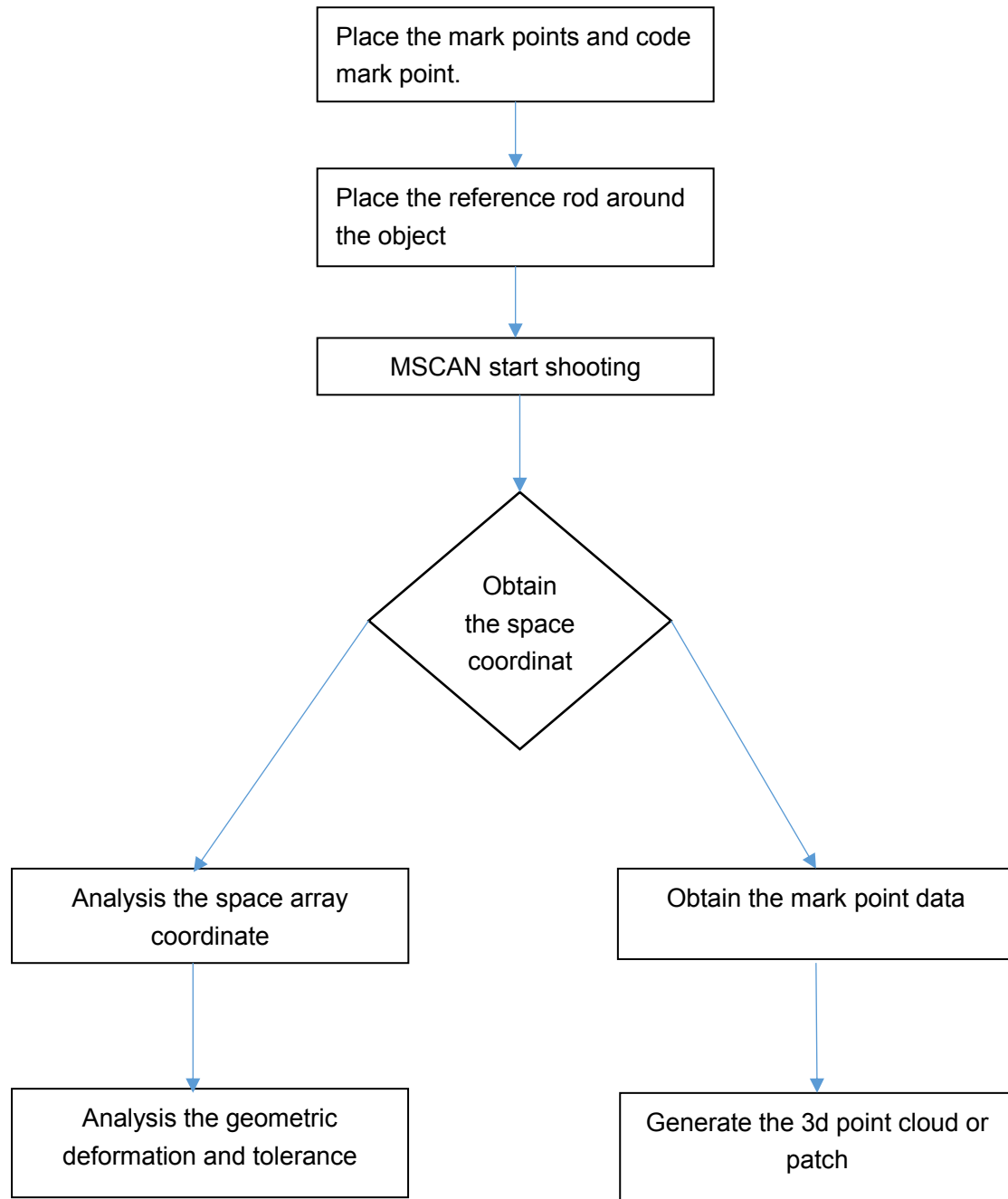
2. Product instruction

2.1 Work Principle

The MSCAN global photography measurement system using high resolution camera to shoot some 2d images and iterate it, calculate the 3d coordinate value and obtain the 3d data and 3d coordinate.

The MSCAN usually be used in measuring and positioning the large objects. The MSCAN can work with the HSCAN to decrease the accumulative error. And it can also work individual to measure the dimension and geometric deformation of the large objects.

2.2 Workflow



2.3 Technical parameter

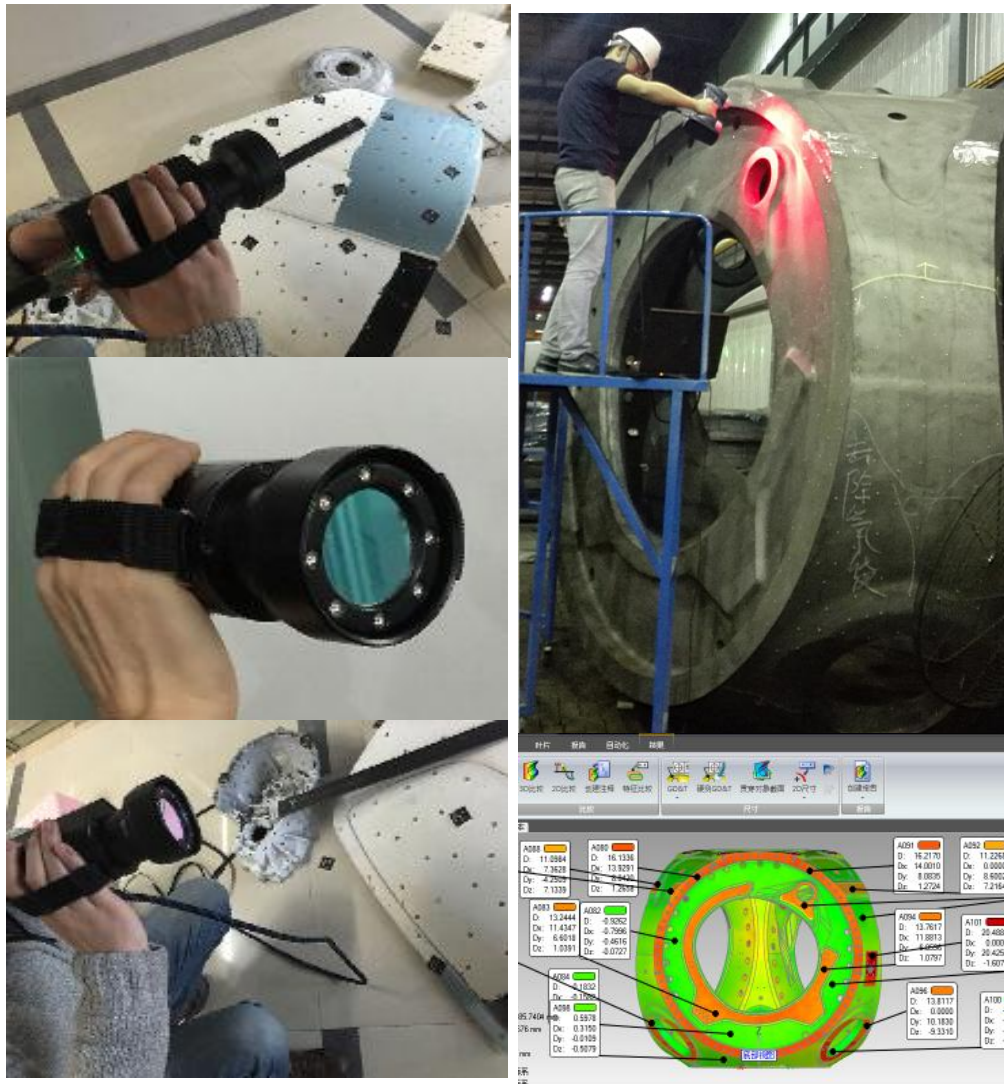
Type	MSCAN
Volumetric accuracy	0.02mm+0.025mm/m
★ Device type	Industrial camera and lens (not DSLR)
★ Weight	≤0.5 kg
★ Obtain mark point position	Real-time calculate and display
★ Data Transmission Mode	wired connection
★ Interface mode	Gigabit Lan

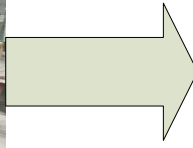
2.4 Supply scope

Compose	Quantity
MSCAN	1 set
High precision reference rod	2 pieces
Combination cable	1 piece
Power adapter	1 set
magnetic coding	300 pieces
Reflective marker	4000 pieces
Waterproof case	1 set
MSCAN soft ware	1 set



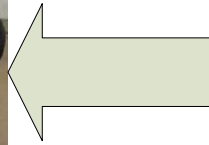
2.5 Application cases





A large industrial machine, likely a rubber roller, with a large horizontal roller and various adjustment mechanisms. The machine is made of metal and has a complex structure with many bolts and adjustment points. It is located in a factory setting.

标杆及编码



MSCAN

Photogrammetry System

Used for large scale workpiece

